



# SPINEL 3G

MOBILE SURGICAL FLUOROSCOPIC  
X-RAY SYSTEM

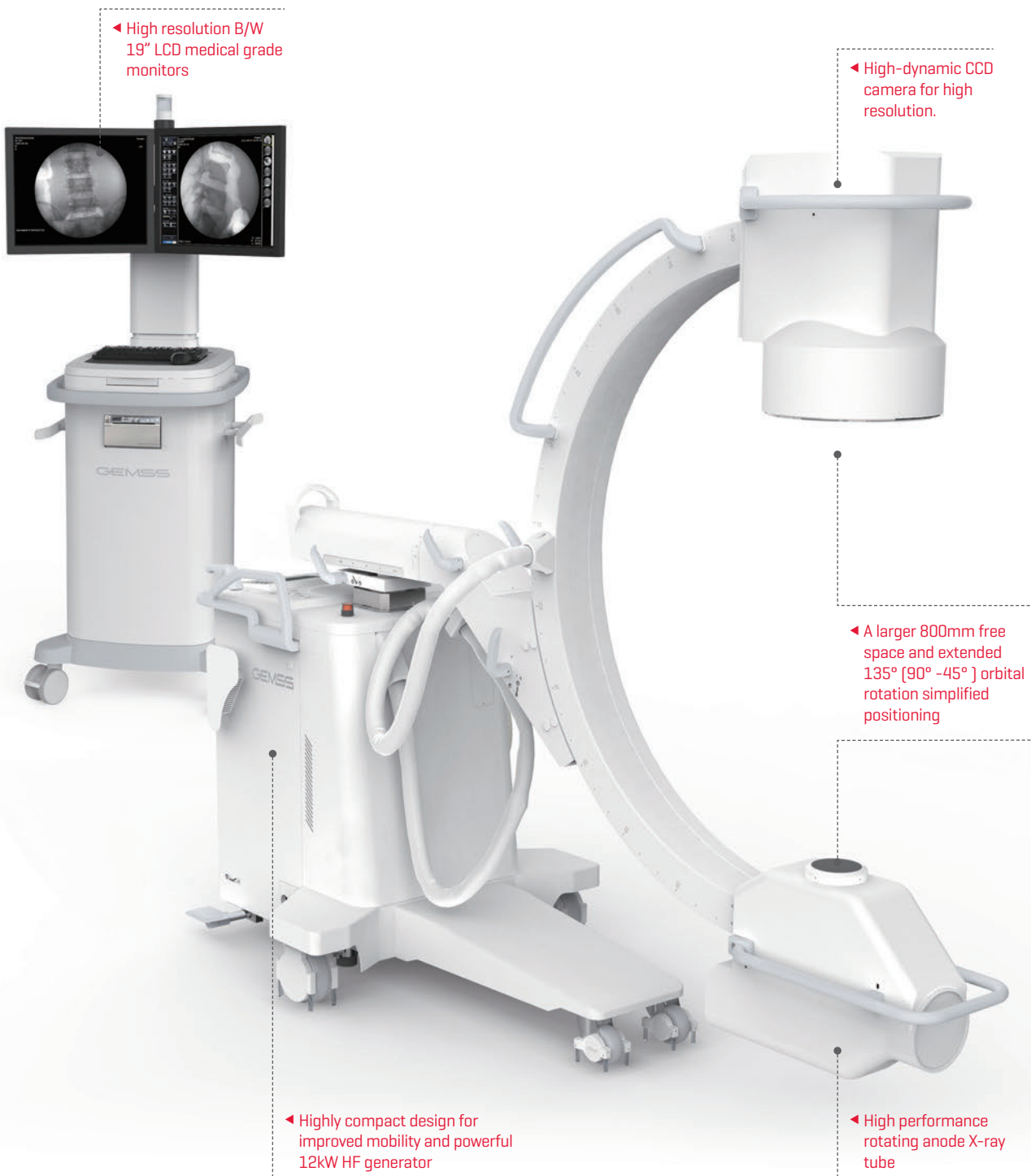
The Power of Passion

**GEMSS**

# Superior Image Performance

The rapidly changing Surgical Imaging market demands increased functionality and improved clinical applications, and the SPINEL 3G high performance surgical C-arm delivers in every detail, from its highly-attractive, modern appearance to its advanced engineering.

Additional sub- handles and a minimized footprint; intuitive pictographic UI; superior image quality from the smallest detail to L-spine lateral projection and lower dose, these are just a few of the advances of the SPINEL 3G.

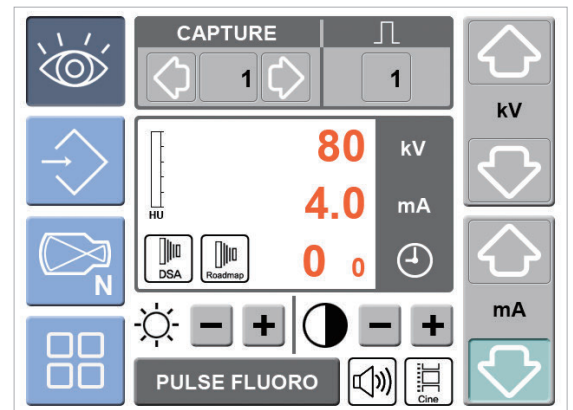


## Optimized Workflow

- Intuitive pictographic UI on Touch-screen OP panel
- Additional sub-handles for enhanced mobility
- Compact design provides more free space for operation
- Motorized up & down monitor cart for easier viewing
- Capable of long time and multi-frame recording
- Supporting multi-selection of frames / sec[1,2,4,8,15,25]
  - \* DSA
  - \* DAP
  - \* Air Kerma Display
  - \* Backup Fluoro
  - \* RAID 1
  - \* Virtual Collimator
  - \* Multi-foot switches
  - \* Sono Printer
  - \* indicates optional item



➤ Multi-foot Switch



➤ Op UI

## Specifications at a Glance



- ↳ 12kW, High Frequency Generator



- ↳ 1K x 1K High Resolution CCD Camera



- ↳ 135° wide Orbital Rotation with Large SID Distance



- ↳ Touch Screen C-arm Control



- ↳ High Performance Rotating Anode X-ray Tube



- ↳ Display of AKR and Cumulative Air Kerma [mGy/min. and mGy]



- ↳ Lowering Dosage
  - Virtual collimator
  - Pulse mode



- ↳ High Resolution B/W 19" LCD Medical Grade Monitors
  - 1,000cd/m<sup>2</sup>



- ↳ Stability
  - Back-up fluoro
  - H.U. display
  - RAID 1



- ↳ Convenience
  - Single power input
  - Sub-handles
  - Automatic monitor up/down
  - 3rd monitor
  - Multi-foot switches



- ↳ Easy Archiving and Documentation
  - DICOM 3.0
  - CD/DVD burner
  - DICOM paper print support
  - USB Port

## Smart CX-View



### Database Management

- More convenient search & save capabilities
- Manage patient information
- Before & after surgery comparison



### Unlimited Image Memory

- Unlimited patient capacity
- Unlimited study images



### Versatile Diagnostic Tools

- Zoom, contrast, reverse, invert
- Filtering, edge enhancement
- Annotation



### PACS Connectivity With DICOM 3.0

- Store and print, modality worklist management
- MPPS, storage commitment, and import & export

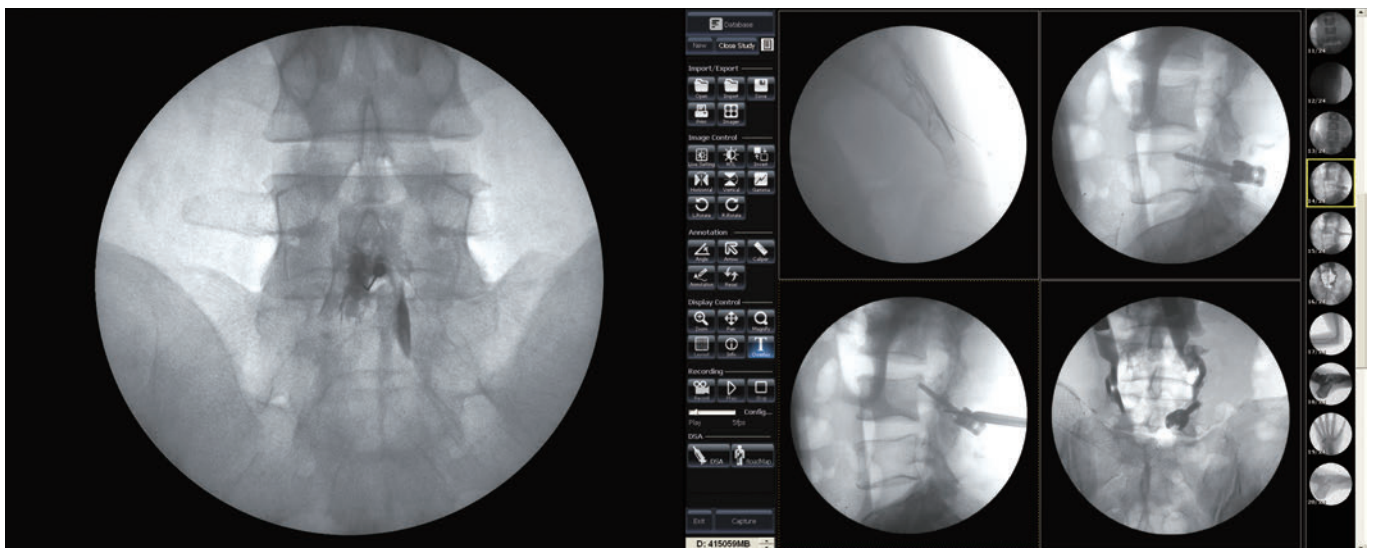
## High-quality Imaging

Wide exposure range(0.2~10mA)

Improved penetration of dense anatomy with high mA (up to 20) in Boost mode

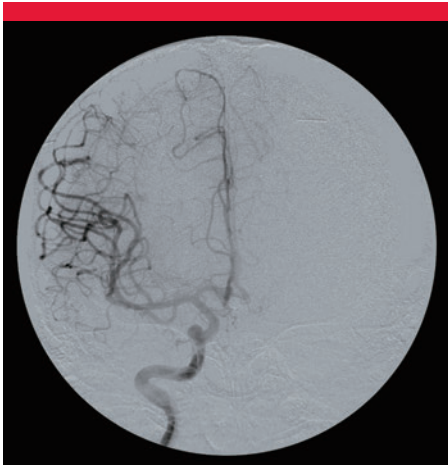
Pulse technology supports 30 FPS [frames / sec] for more precise operation

DSA cine for peripheral angiography function



## Applications

- General Surgery
- Orthopedic Surgery
- Neurology
- Gynecology
- Vascular Surgery
- Interventional Radiology



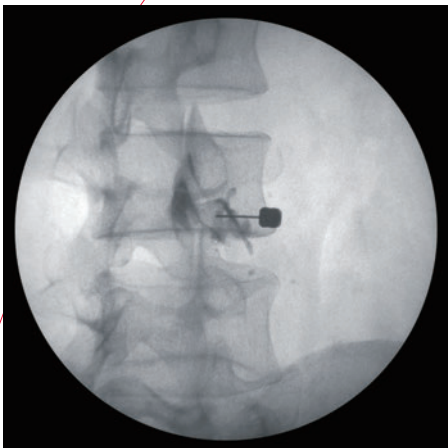
Neurosurgery



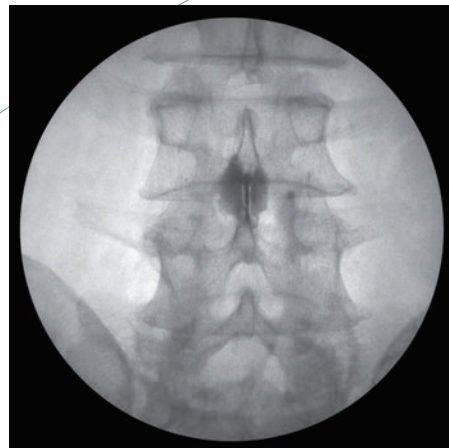
General Surgery



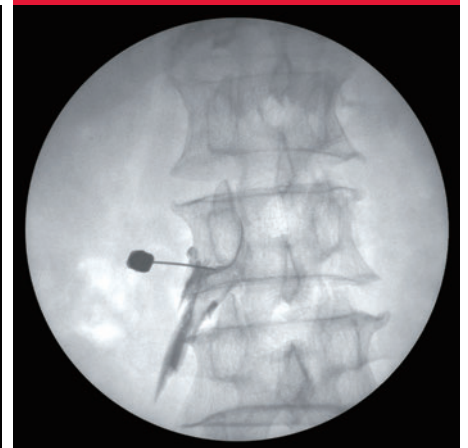
General Surgery



Pain Management



Pain Management



Spine



Spine

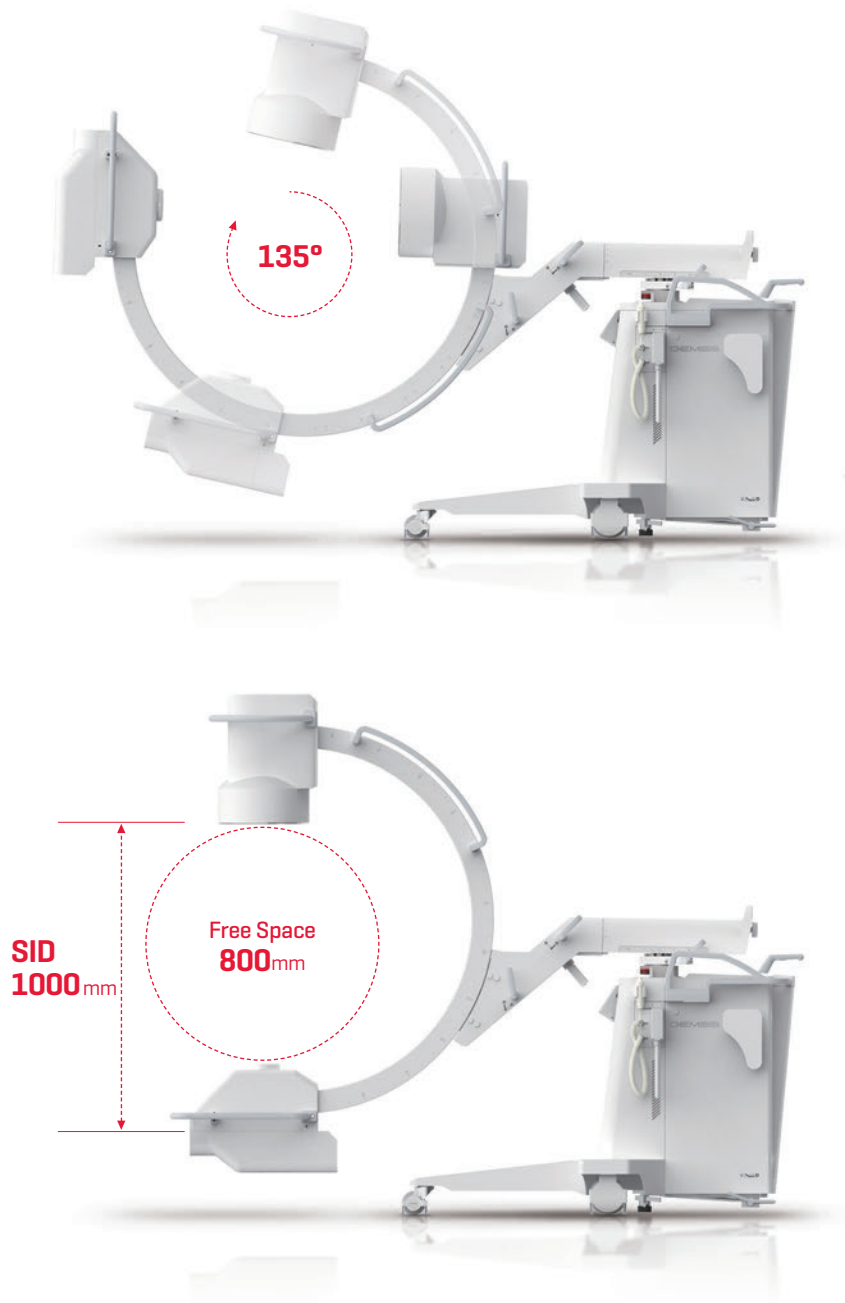


Orthopedics



Orthopedics

## Flexible Movement



**GEMSS**

GEMSS MEDICAL SYSTEMS CO., LTD.

[www.gemss-medical.com](http://www.gemss-medical.com)

©GEMSS MEDICAL SYSTEMS reserves the right to make any changes in design and specifications contained herein without prior notice and will not be liable for any consequences resulting from the use of this publication. Any technical data contained in this document may vary within defined tolerances. Original images always lose a certain amount of detail when reproduced. Please contact your local GEMSS sales representative for the most current information.