



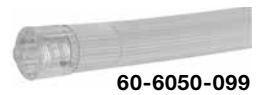
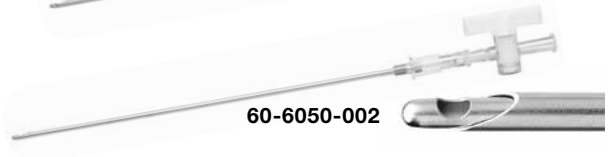
## Insufflation System

	Ref. No.
40L Dual Port Insufflator.....	GS1002
50L Insufflator.....	GS2000
Hose and Yoke for CO <sub>2</sub> , E-Tank, 4'.....	GS1052
DIN477, Hose and Connection for CO <sub>2</sub> Tank.....	GS202K
DISS Hose for "wall" CO <sub>2</sub> 2'.....	GS1053
Dual Tank Shuttle Valve System .....	GS2050
Power Cord, 155 VAC 6'.....	C7104
Power Cord, 230 VAC 10'.....	C7105
CO <sub>2</sub> Warmer, in-line, reusable .....	GS1012
Cleaning Brushes for Warmer assembly, 10/pkg.....	GS1054
Adapter, CPC to IEC (for C7011 tubing) .....	GS1050
Adapter, CPC to Luer (for C7010 tubing) .....	GS1051
Insufflation Tubing Set, disposable, CPC/Luer, w/filter.....	GS1016
Insufflation Tubing Set, disposable, Luer/Luer, w/filter.....	C7010***
Insufflation Tubing Set, disposable, IEC/Luer, w/filter .....	C7011***
***C7010 tubing requires a GS1051 adapter. C7011 tubing requires a GS1050 adapter.	
CPS Tubing Set, disposable, w/filter .....	GS1013

**Note: To order items on this page please contact Customer Service at +1(800) 237-0169 or +1(727) 392-6464.**

## Disposable Insufflation Needles and Tubing/Filter Set Systems

	Ref. No.
Pneumoperitoneum Insufflation Needle..... 14 gauge, 12cm, with stainless steel tip guard and band indicator, 1/pkg, 10/cs	60-6050-001
Pneumoperitoneum Insufflation Needle..... 14 gauge, 15cm, with stainless steel tip guard and band indicator, 1/pkg, 10/cs	60-6050-002
Insufflation Tubing (10' length)..... and 0.1 micron hydrophobic filter assembly with suction type connector, 1/pkg, 10/cs	60-6050-097
Insufflation Tubing (10' length)..... and 0.1 micron hydrophobic filter assembly with "O" ring connector, 1/pkg, 10/cs	60-6050-098
Insufflation Tubing (10' length)..... and 0.1 micron hydrophobic filter assembly with luer lock connector, 1/pkg, 10/cs	60-6050-099
<b>Laparoscopic Smoke Eliminator</b> Tubing Set..... with .2 micron filter and adjustable valve for laser and cautery smoke removal	<b>CD3900</b>



**Note: To order items on this page please contact Customer Service at (800) 448-6506 or +1(315) 797-8375.**