



# The System 5000™ Electrosurgical Unit (ESU)

The standard in consistent energy delivery, the System 5000™ unites proprietary dynamic response technology with an array of specialty modes for desired clinical effect.



**ALTRUS®**  
TISSUE FUSION SYSTEM



**GOLDVAC™**  
SMOKE EVACUATION PENCIL



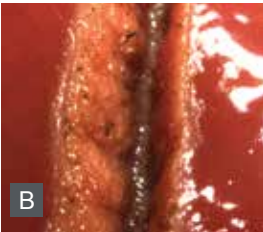
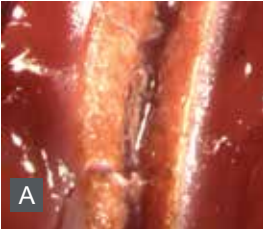
**AER DEFENSE™**  
SMOKE EVACUATION SYSTEM



To learn more about these and other innovative products, call 800-448-6506 or visit [ConMed.com](http://ConMed.com).

# A Perfect Combination of Reliability and Precision

Since its introduction, the System 5000™ electrosurgical unit (ESU) has become synonymous with performance, precision and reliability. Trusted around the world, the versatility of the System 5000™ meets a variety of procedure-specific energy output needs including General, Laparoscopic and Robotic surgery. The System 5000™ has been formally validated for use with the da Vinci Surgical System with a custom energy activation cable allowing seamless activation from the da Vinci console.



Comparison of Pure Cut at 50 watts on bovine liver. **A.** ConMed's System 5000™ ESU. **B.** Competitor's ESU. Less charring occurs with the System 5000....

“Controlled energy that delivers the desired clinical effect to tissue is critical!”

## Dynamic Response Technology

This proprietary technology delivers optimal clinical effects through continuous synchronization of current and voltage. It samples the current and voltage 450,000 times per second which enables it to respond to tissue impedance changes in less than 10 milliseconds. This means the System 5000™ achieves optimum energy output levels quicker and more accurately – ensuring that only the precise voltage needed is safely delivered to each tissue type.

“I want my procedures to be as safe as possible. I'm concerned about coupling and inadvertent tissue damage.”

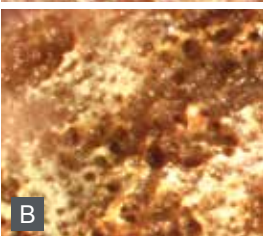
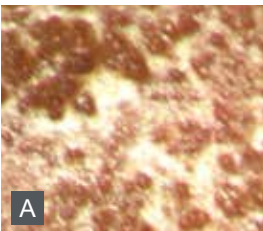
## Lap Mode

Unlike other generators which limit voltage only in Cut Mode, The System 5000's Lap Mode effectively limits voltage in all Monopolar modalities to below 2,700 volts, providing you peace of mind. This unique safety feature significantly reduces the risk of coupling and inadvertent burns during laparoscopic and robotic surgery.

“Minimizing blood loss through hemostasis is important.”

## Pulse Coag Mode

This unique mode provides pulsing bursts of coagulation energy—resulting in precise hemostasis with less tissue carbonization than standard coag at equivalent power settings. By pulsing coagulation energy on and off every 2.5 milliseconds, Pulse Coag technology safely delivers higher peak power with an effective lower average power.



**A.** Standard Pulse Coag at 50 watts on bovine liver using the System 5000™. **B.** Standard Coag at 50 watts

“There are a million things to do during surgery. It helps that the System 5000™ is easy to work with.”

The System 5000™ is remarkably easy to learn and use. Every unit features an ergonomic design and intuitive interface. There are no hidden menus to find and scroll through when in use. Features like user-programmed memory settings and modes that automatically optimize energy output make using and adjusting these generators fast and simple. The user programmable settings help to quickly switch between the preferred settings for a specific procedure or a specific surgeon.

“Versatility is critical: I need equipment that can adjust to the many OR needs of my hospital.”

## Integrated with ConMed AER DEFENSE™ Smoke Evacuation System

Safe surgical smoke evacuation is critical in the OR. The System 5000™ can be seamlessly integrated with the ConMed AER DEFENSE™ smoke evacuation system, where it automatically triggers the smoke evacuation only when energy is activated. The GoldVac™ & ClearVac™ Smoke Evacuation pencils as well as ConMed Laparoscopic Tubing can be effectively used with this great feature.



The System 5000™ with integrated AER DEFENSE™ Smoke Evacuator

“The feature rich System 5000™ is surprisingly affordable”

## Modular Design

The System 5000™ offers stacking adapters to accommodate the ConMed Altrus® Thermal Fusion system for vessel sealing or a second System 5000™ to support your advanced energy needs. Unlike ESU's with built in features such as vessel sealing that add thousands of dollars to the overall purchase price; the modular System 5000™ gives you the choice to integrate only the features you need when you need them.

For over a decade, the System 5000™ has earned a global reputation as one of the most durable electrocautery generators in the world. This longstanding reputation of unwavering performance and service has earned the System 5000™ a place in the most advanced and respected military and civilian Operating Rooms around the world.

SYSTEM 5000™  
ESU



The System 5000™ with integrated Altrus® Tissue Fusion System

SYSTEM 5000™  
ESU





The System 5000 is compatible for use with the da Vinci S & Si surgical robot systems

Multiple COAG  
(3 Modes)

BIPOLAR  
(2 Modes)



Pulse Coag  
Mode

Remote Power  
Control

Illuminated Accessory  
Ports

On/Off Switch

## Customer Testimonials

“I’ve seen significantly less charring and smoke when using ConMed’s System 5000™ in Laparoscopic mode. The power delivery is precise and perfectly controlled during Robotic Surgery.”

–**Dr. Domenico Savatta,**

Chief of Minimally Invasive Adult Urologic Surgery,  
Newark Beth Israel Medical Center

SYSTEM 5000™  
ESU



“I use the System 5000™ ESU in Pulse Coag mode during surgery. The pulsed coagulation provides controlled power delivery for rapid hemostasis without producing too much heat causing necrosis.”

– **Dr. Paul G. Saccone,**

Plastic Surgery,  
Overlook Medical Center and Newark  
Beth Israel Medical Center



“I began to research Electrosurgery units for our department several years ago. We owned older ESU technology that needed replacing. I first saw the System 5000™ at an AORN conference and knew right away the ESU’s we needed for our department. The System 5000 has the bipolar capabilities we were looking for. The audible and visual display is very important to our GYN physicians. Additionally, the micro and macro settings make our ENT physicians happy as well. We are very pleased to have purchased the System 5000 units in our department and look forward to adding more when budget allows.”

– **Candy Riley,**

RN, CNOR, Educator,  
Florida Hospital Winter Park

The System 5000™ provides advanced, easy-to-use specialty modes for a wide range of clinical indications. These pre-programmed modes establish a precise baseline of safe energy output.

### **General Mode**

General Mode provides the full energy performance of our Dynamic Response Technology – immediately detecting, and automatically adjusting to, changes in tissue impedance. This mode is typically used in all forms of general and specialty surgery.

*Specialty: General Surgery, Urology, Gynecology*

### **Lap Mode**

Lap Mode technology limits output voltages below 2,700 volts in all of the System 5000's Monopolar modalities. Lap mode is designed to help reduce the potential risk of inadvertent burns from capacitive coupling from excess voltage.

*Specialty: Robotic Surgery, All Minimally Invasive Procedures*

### **Fluids Mode**

Fluids Mode technology effectively “kick starts” the initiation of surgical energy providing an immediate clinical effect in high load/low impedance conditions. This mode is typically used in surgical procedures where there are fluids at the surgical site.

*Specialty: Urology, Gynecology, Arthroscopic procedures*

### **Pulse Coag Mode**

Pulse Coag technology provides pulsing bursts of coagulation energy for more control of hemostasis at the operative site. Result: visibly less tissue carbonization with unsurpassed precision and control.

*Specialty: General Surgery*

### **Pulse Cut Mode**

Pulse Cut technology provides control of cutting depth for critical dissections necessary for Endoscopic retrograde cholangiopancreatography (ERCP).

*Specialty: Gastrointestinal (GI)*

### **Micro Bipolar Mode**

Micro Bipolar technology is ideal for fine and precise coagulation. Ideal for procedures which require narrow margins using specialized bipolar forceps.

*Specialty: Neurology, ENT*

### **Macro Bipolar Mode**

Macro Bipolar technology is ideal for more energy intensive bipolar applications which require wider margins of coagulation.

*Specialty: General Surgery, Endoscopy, Urology, Gynecology*





525 French Road, Utica, NY 13502

SYSTEM 5000™  
ESU

## Product Specifications

Mode	Watts	Max Peak Voltage	Crest Factor (Typical)	Frequency (KHz)	Output Control System	Dynamic Response
<b>Monopolar</b>						
Pure Cut	300	800	1.4-1.7	391	Set-Up and Power Setting Memory	9 Memory Locations
Blend 1 Cut	200	860	1.5-1.9	391	Warranty	2 Yrs Standard 7 Yrs Extended
Blend 2 Cut	200	1100	1.8-2.4	391	Contact Quality Monitoring System (CQM)	Improved ARM
Blend 3 Cut	200	1480	2.4-2.9	391	CQM Range/Trip Point	10 -150Ω / 30%
<b>Special Features – Pulse Cut</b>						
Pinpoint Coag	120	2120	3.7-4.6	391	Cooling System	Convection/Fan
Standard Coag	120	3140	5.6-6.6	562	Power Display Accuracy	10% or 3W @ Rated Load
Spray Coag	80	6350	7.1-9.7	562	Technology	Isolated RF Output
<b>Special Features – Pulse Coag</b>						
<b>Bipolar</b>						
Micro Bipolar	50	170	1.5-1.9	391	Remote Power Control with Standard Electrosurgical Pencil	
Macro Bipolar	90	610	1.6-2.0	391	Continuous Resistance Display	
<b>Special Features – Audible/Visual Output Meter</b>						
					Self Diagnosis	
					- General Mode	- Auto Sensing Pad Type
					- Fluids Mode	- Illuminated Portals
					- Laparoscopic Mode	- Integrated Smoke Evacuation System
					- Pulse Cut	- Sloped Portals
					- Pulse Coag	- 4 Independent Output Portals
					- ReadPlug™ Universal Accessory Portal	- Channeled Accessory Portals
					- Remote Power Control	- Mobile Pedestal
					- Bipolar Output Meter	
					Weight	21.5 lbs (9.75 kg)
					Dimensions	H: 5.5" (9.75 cm) W: 13.5" (35 cm) D: 21.5" (54.6 cm)

## Ordering Information

### Description

### Catalog Number

System 5000™ ESU, 120V	60-8005-001
System 5000™ ESU, 100V – 240V (Symbols Front Panel)	60-8005-002
System 5000™ ESU, 100V – 240V	60-8005-003
Includes a System 5000™ – 120V ESU, Mobile Pedestal, Upper Storage Basket, Lower Storage Basket, Monopolar Footswitch, Bipolar Footswitch (English Front Panel)	60-8005-SYS
Includes a System 5000™ – 100V to 240V ESU, Mobile Pedestal, Upper Storage Basket, Lower Storage Basket, Monopolar Footswitch, Bipolar Footswitch (Symbols Front Panel)	60-8015-SYS
Includes a System 5000™ – 100V to 240V ESU, Mobile Pedestal, Upper Storage Basket, Lower Storage Basket, Monopolar Footswitch, Bipolar Footswitch (English Front Panel)	60-8018-SYS
Includes a 120V System 5000™ ESU, Mobile Pedestal, Upper Storage Basket, Lower Storage Basket, Saddlebag Lower Basket, Monopolar Footswitch, Bipolar Footswitch, AER DEFENSE® Smoke Evacuator and Vacuum Control Assembly (English Front Panel)	60-8005-SYS-VAC
Mobile Pedestal including Upper and Lower Storage Baskets	60-8040-001
Monopolar Footswitch	60-6700-001
Bipolar Footswitch	60-5103-001
AER DEFENSE® Smoke Evacuator – 100/120V (includes AC Power Cord, 4' ESU Activation Cable, and Operator's Manual – Filters sold separately)	60-8080-120
AER DEFENSE® Smoke Evacuator – 220/240V (includes 4' ESU Activation Cable – Filters sold separately)	60-8080-230
AER DEFENSE® FilterOne™ ULPA (2/case)	60-8084-001
Smoke Evacuator Vacuum Control Assembly	60-8056-001
Saddlebag Lower Basket	60-8041-001
<b>NSN Number</b>	<b>Part Number</b>
6515-01-570-7407	60-8005-001
6515-01-611-4620	60-8005-USM
6515-01-572-5448	60-8005-D0D

Customer Service: 1-800-448-6506  
International Sales: 1-315-797-8375  
Fax: 1-800-438-3051

ConMed.com  
info@mail.conmed.com